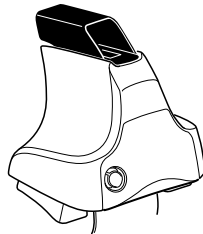
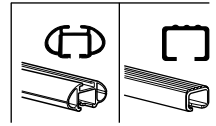


Kit 1694

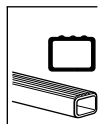
HYUNDAI i40, 4-dr Sedan, 11-



754 Rapid System
480R Rapid Traverse (North America)



480 Traverse (North America)



Max.
60 kg
Max.
132 lbs

Kit XXXX
 instructions

x1

x4
 754 Rapid System

x4
 480R Rapid Traverse (North America)

x4

x4

754 Rapid System
 480R Rapid Traverse (North America)

x1

x4

x4

x4

480 Traverse (North America)

x2

x2
 23 mm

x2
 23 mm

x2
 23 mm

x2
 23 mm

x4

x4

x1
 17 mm

x2
 23 mm

x2

x4

x2

x2

(North America)

297 **x2**

1163 **x1**

1164 **x1**

269 **x1**

272 **x1**

366 **x1**

367 **x1**

x1

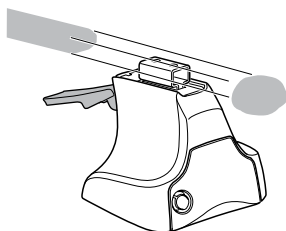
1



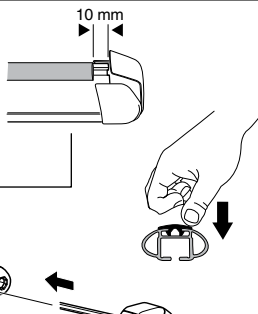
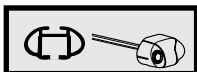
2



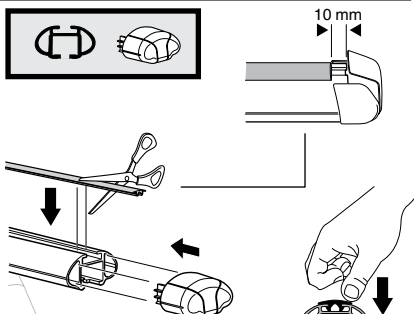
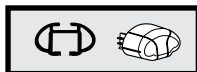
754 Rapid System
480R Rapid Traverse
(North America)



x4



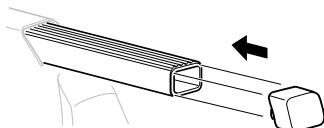
x4



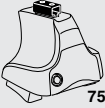
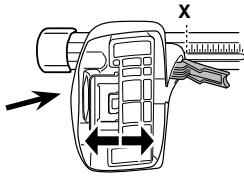
x4



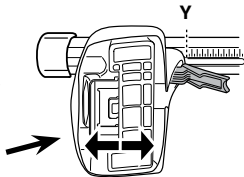
480 Traverse
(North America)



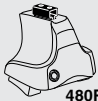
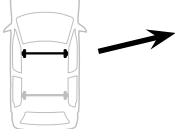
x4

3**754** Rapid System

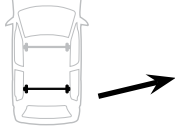
	X
HYUNDAI i40, 4-dr Sedan, 11-	43,5



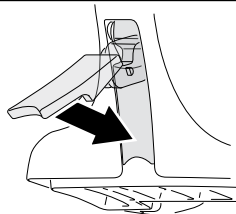
	Y
HYUNDAI i40, 4-dr Sedan, 11-	41,5

3**480R** Rapid Traverse**480** Traverse**(North America)**

	X inch	X mm
HYUNDAI i40, 4-dr Sedan, 11-	42 3/4"	1086 mm

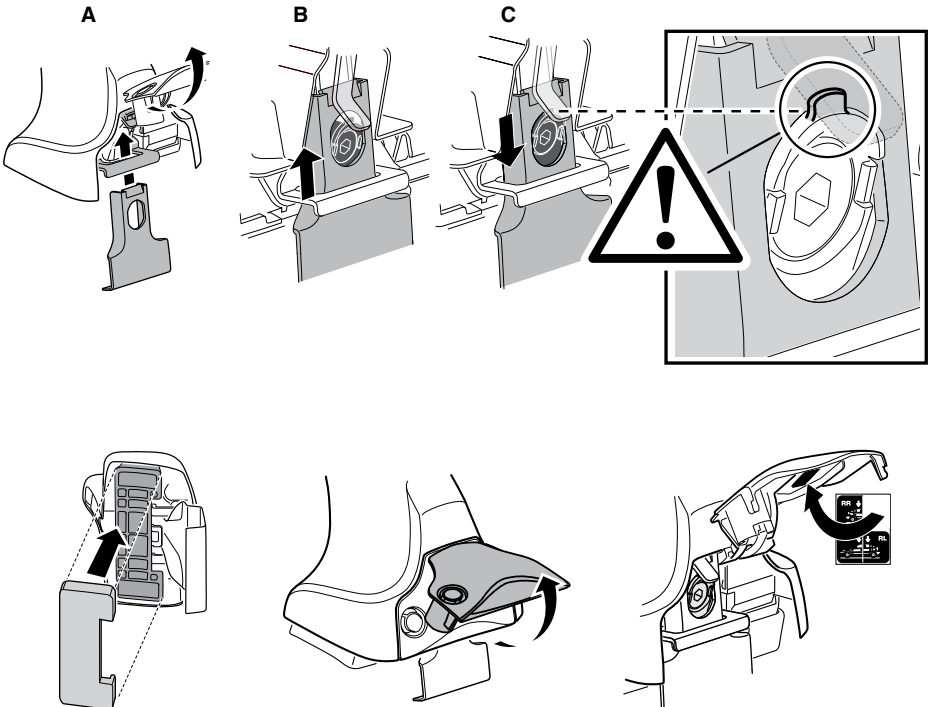
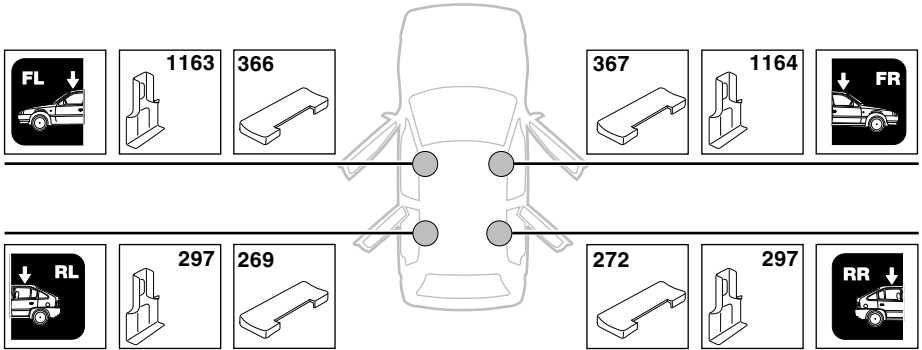


	Y inch	Y mm
HYUNDAI i40, 4-dr Sedan, 11-	42"	1066 mm

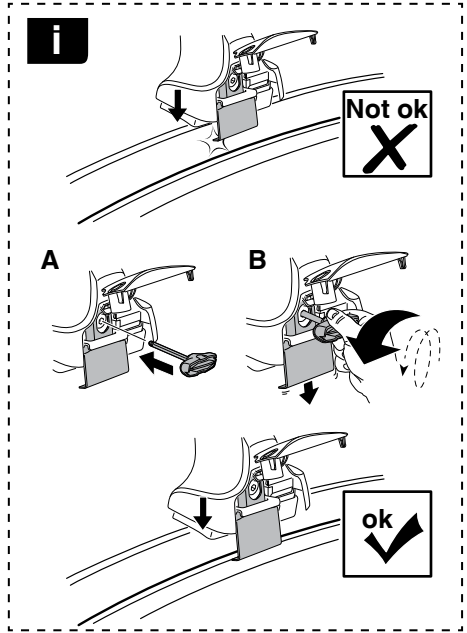
4

5

HYUNDAI i40, 4-dr Sedan, 11-

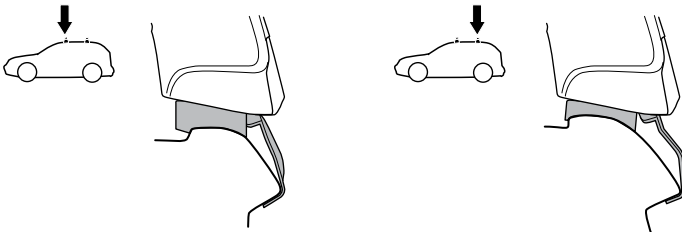
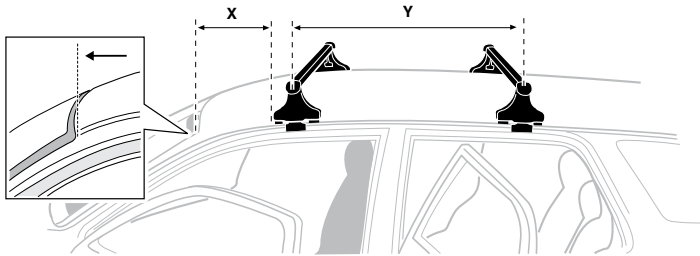


6



HYUNDAI i40, 4-dr Sedan, 11-

X mm	Y mm	X inch	Y inch
350 mm	700 mm	13 3/4"	27 1/2"



7



GB/US	Tighten alternately
D	Die Schrauben abwechselnd anziehen
F	Serrer alternativement chaque côté
NL	Afwisselend aan de linker- en de rechterkant aandraaien
I	Alternare il serraggio delle viti
E	Apertar alternativamente
PT	Aperte alternadamente
S	Dra åt växelvis
FIN	Kierrä vuorotellen
EST	Pinguldage vaheldumisi
LAT	Pielveiciet pamišus
LIT	Užsukinėkite pakaitomis
PL	Śruby dokręcaj naprzemiennie
RU	Загряивайте попеременно

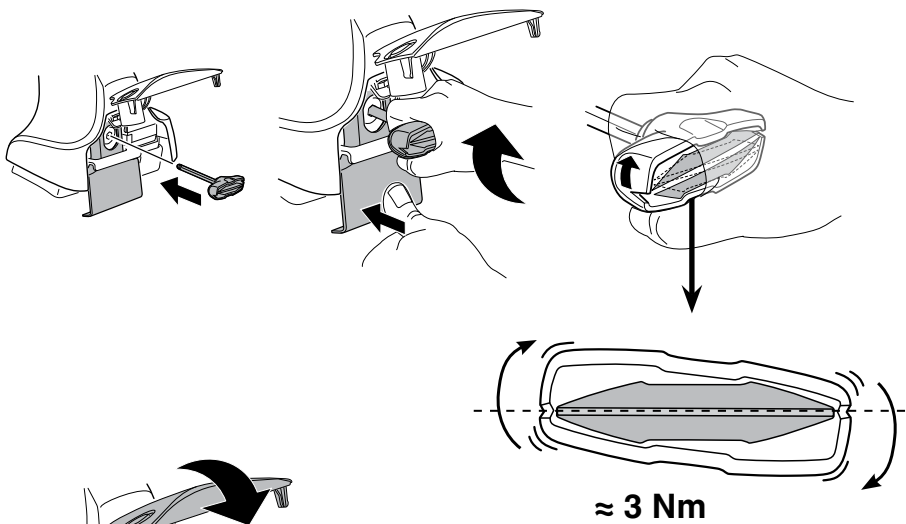
CZ	Pokręřta багаžnika dokręcaj naprzemiennie.
SK	Dofahajte striedavo
SLO	Privijajte izmenično.
HR	Naizmjenično zategnite
HU	Egymástól függetlenül szorítandó
GR	Σφιγίγες ενολάξ
TR	Dönüşümlü sıkın

中文 交替拧紧

한국어 번갈아 가며 조이십시오.

日本語 交互に締め付けてください。

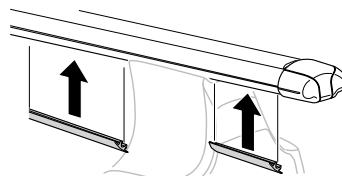
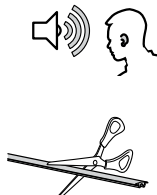
ไทย ชันในแบบสลับ

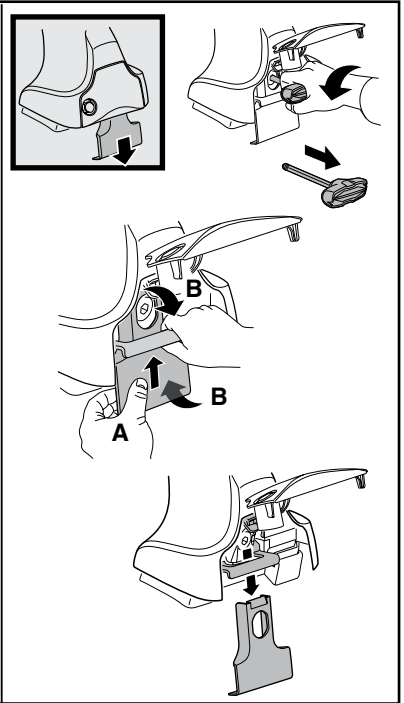
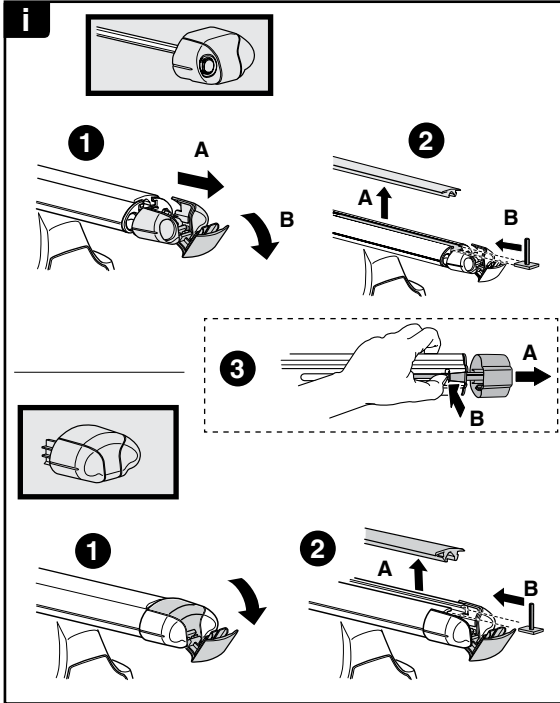


8



x1
17 mm





THULE
SWEDEN
**ONE
KEY
SYSTEM**



		(x4)
		(x6)
		(x8)
NA		(x10)
EUR		(x12)
ASIA		



WW ▶ Thule Sweden AB, Box 69, 330 33 Hillerstorp, SWEDEN
NA ▶ Thule Inc., 42 Silvermine Road, Seymour, Connecticut 06483, USA

info@thule.com
customer.service@thule.com

www.thule.com