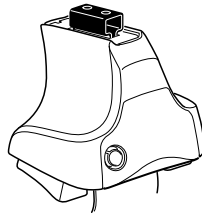
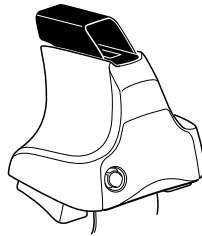
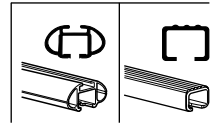


# Kit 1689

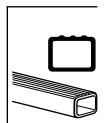
LEXUS GS250, 4-dr Sedan, 12-



**754** Rapid System  
**480R** Rapid Traverse (North America)



**480** Traverse (North America)



754 Rapid System  
480R Rapid Traverse (North America)

480 Traverse (North America)

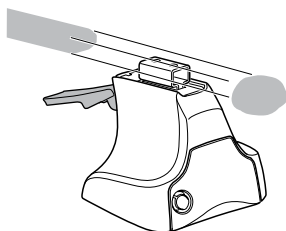
1



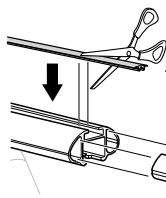
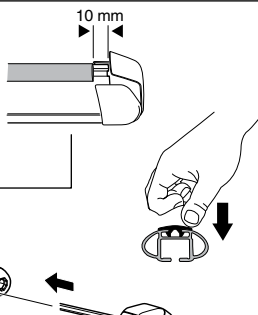
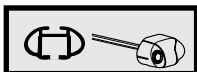
2



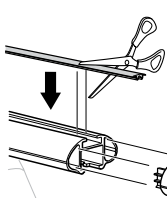
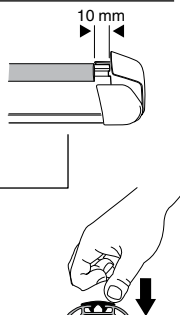
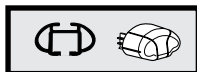
754 Rapid System  
480R Rapid Traverse  
(North America)



x4



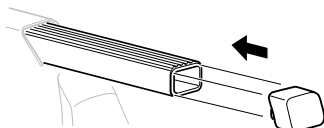
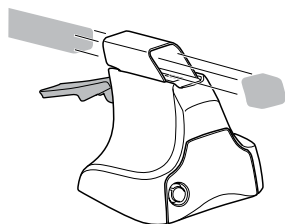
x4



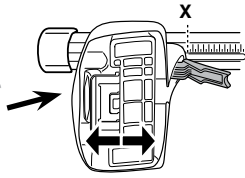
x4



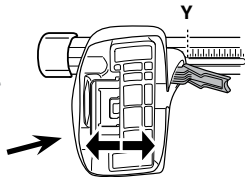
480 Traverse  
(North America)



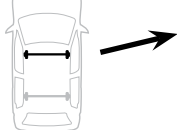
x4

**3****754** Rapid System

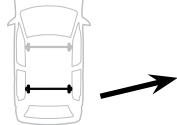
	<b>X</b>
<b>LEXUS GS250, 4-dr Sedan, 12-</b>	<b>34,5</b>



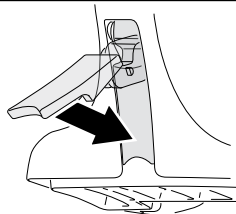
	<b>Y</b>
<b>LEXUS GS250, 4-dr Sedan, 12-</b>	<b>34</b>

**3****480R** Rapid Traverse**480** Traverse**(North America)**

	<b>X inch</b>	<b>X mm</b>
<b>LEXUS GS250, 4-dr Sedan, 12-</b>	<b>39 1/4"</b>	<b>996 mm</b>

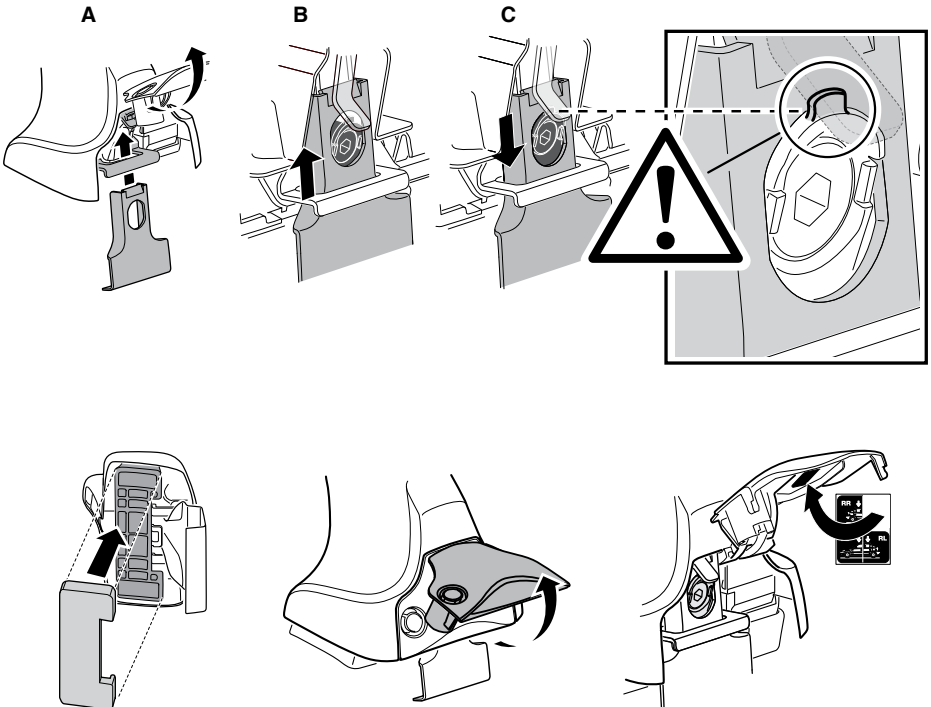
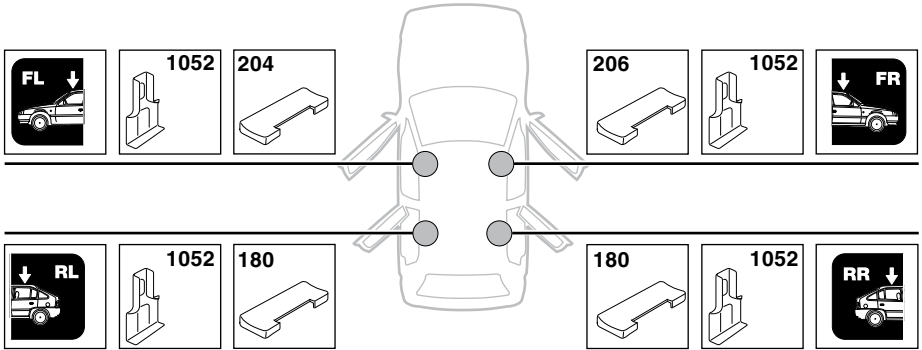


	<b>Y inch</b>	<b>Y mm</b>
<b>LEXUS GS250, 4-dr Sedan, 12-</b>	<b>39"</b>	<b>991 mm</b>

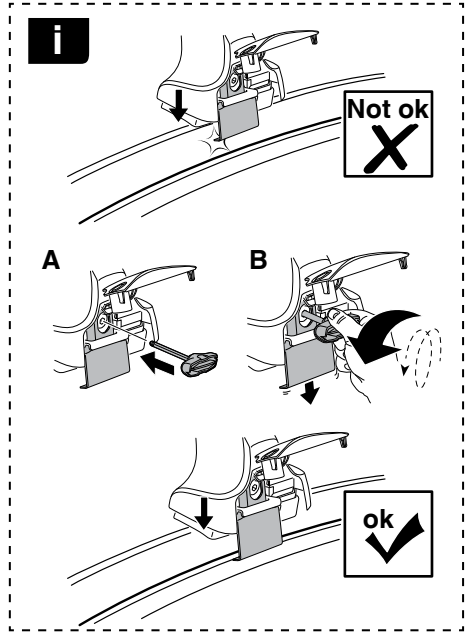
**4**

# 5

LEXUS GS250, 4-dr Sedan, 12-

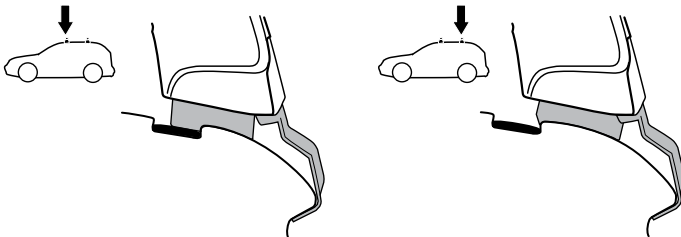
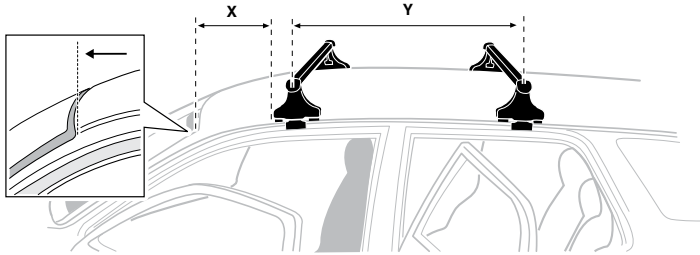


6



LEXUS GS250, 4-dr Sedan, 12-

X mm	Y mm	X inch	Y inch
210 mm	730 mm	8 1/4"	28 3/4"



**7**

**GB/US** Tighten alternately  
**D** Die Schrauben abwechselnd anziehen  
**F** Serrer alternativement chaque côté  
**NL** Afwisselend aan de linker- en de rechterkant aandraaien  
**I** Alternare il serraggio delle viti  
**E** Apertar alternativamente  
**PT** Aperte alternadamente  
**S** Dra åt växelvis  
**FIN** Kierrä vuorotellen  
**EST** Pinguldage vaheldumisi  
**LAT** Pieļieciet pamišus  
**LIT** Užsukinėkite pakaitomis  
**PL** Śruby dokręcaj naprzemiennie  
**RU** Затягивайте попеременно

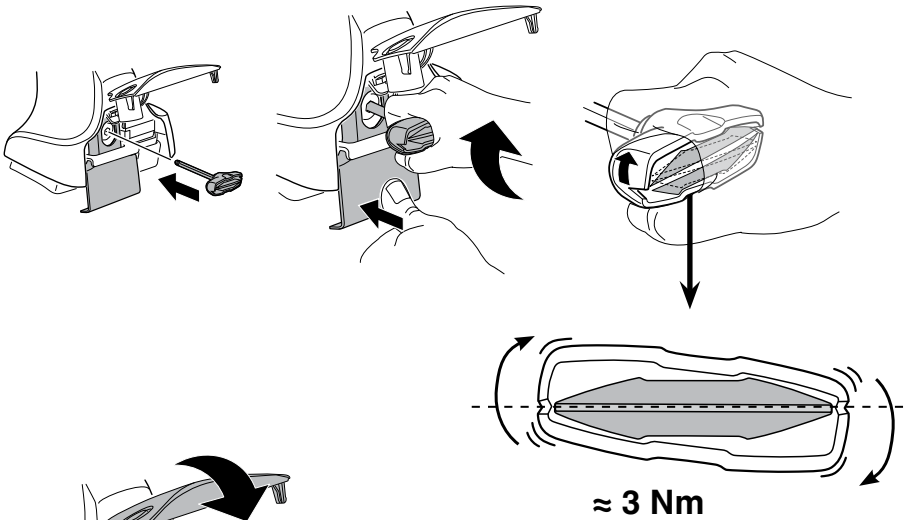
**CZ** Pokręťta bagażnika dokręcaj naprzemiennie.  
**SK** Dofahajte striedavo  
**SLO** Privijajte izmenično.  
**HR** Naizmjenočno zategnite  
**HU** Egymástól függetlenül szorítandó  
**GR** Σφιγίγτες εναλλάξ  
**TR** Dönüşümlü sıkın

**中文** 交替拧紧

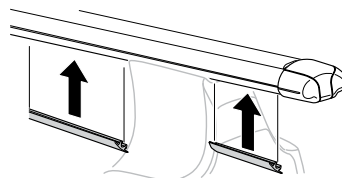
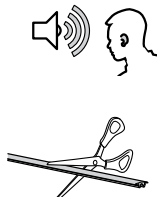
**한국어** 번갈아 가며 조이십시오.

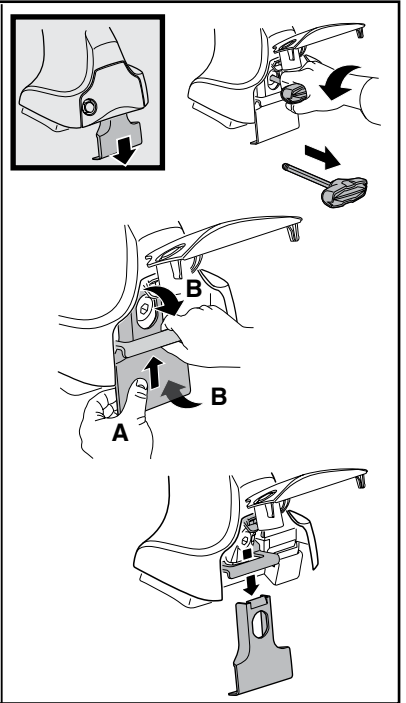
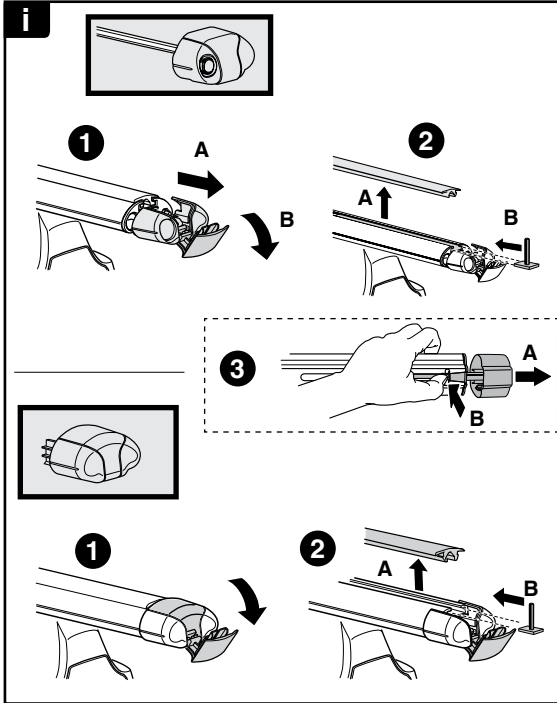
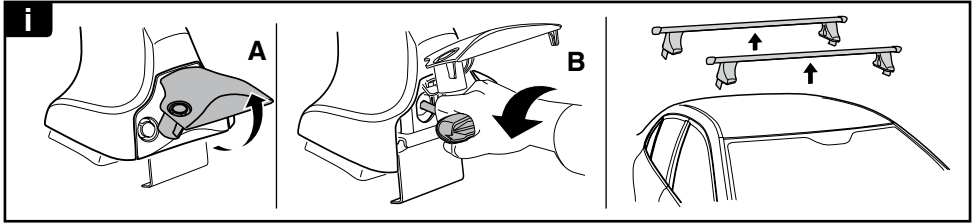
**日本語** 交互に締め付けてください。

**ไทย** ชันในแบบสลับ

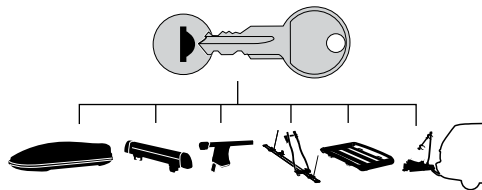
**8**

**x1**  
17 mm





**THULE**  
SWEDEN  
**ONE  
KEY  
SYSTEM**



**544** (x4)

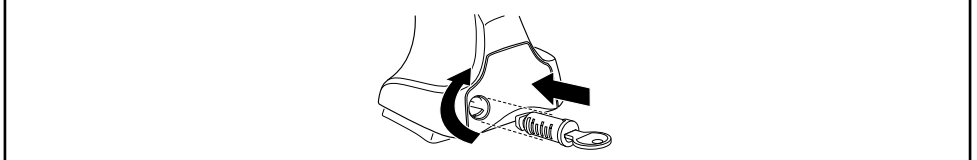
**596** (x6)

**588** (x8)

NA **510** (x10)

EUR **452** (x12)

ASIA



WW ▶ Thule Sweden AB, Box 69, 330 33 Hillerstorp, SWEDEN  
NA ▶ Thule Inc., 42 Silvermine Road, Seymour, Connecticut 06483, USA

info@thule.com  
customer.service@thule.com

www.thule.com

503-1689-01