

# Kit 1655

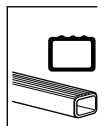
HYUNDAI Azera, 4-dr Sedan, 11-  
HYUNDAI Grandeur, 4-dr Sedan, 11-



754 Rapid System  
480R Rapid Traverse (North America)



480 Traverse (North America)



754 Rapid System  
480R Rapid Traverse (North America)

480 Traverse (North America)

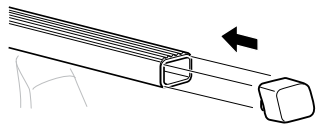
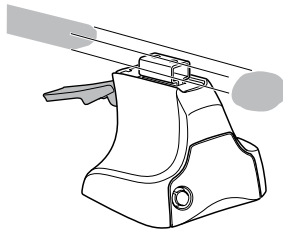
1



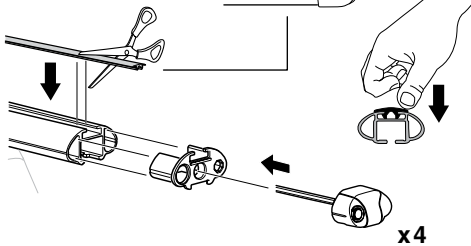
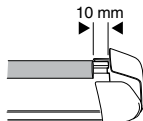
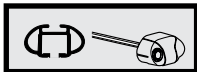
2



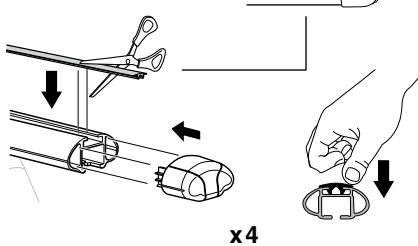
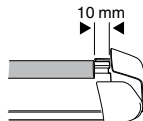
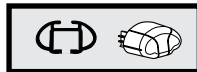
754 Rapid System  
480R Rapid Traverse  
(North America)



x4



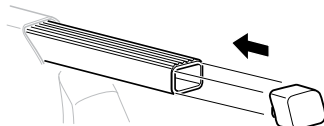
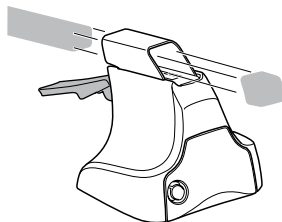
x4



x4



480 Traverse  
(North America)

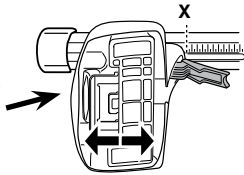


x4

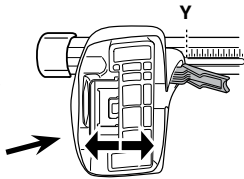
**3**



**754** Rapid System



	<b>X</b>
<b>HYUNDAI Azera, 4-dr Sedan, 11-</b>	<b>42</b>
<b>HYUNDAI Grandeur, 4-dr Sedan, 11-</b>	<b>42</b>



	<b>Y</b>
<b>HYUNDAI Azera, 4-dr Sedan, 11-</b>	<b>39</b>
<b>HYUNDAI Grandeur, 4-dr Sedan, 11-</b>	<b>39</b>

**3**



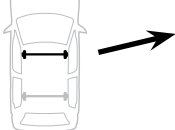
**480R** Rapid Traverse



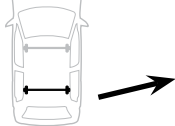
**480** Traverse



**(North America)**



	<b>X inch</b>	<b>X mm</b>
<b>HYUNDAI Azera, 4-dr Sedan, 11-</b>	<b>42 1/8"</b>	<b>1071 mm</b>
<b>HYUNDAI Grandeur, 4-dr Sedan, 11-</b>	<b>42 1/8"</b>	<b>1071 mm</b>



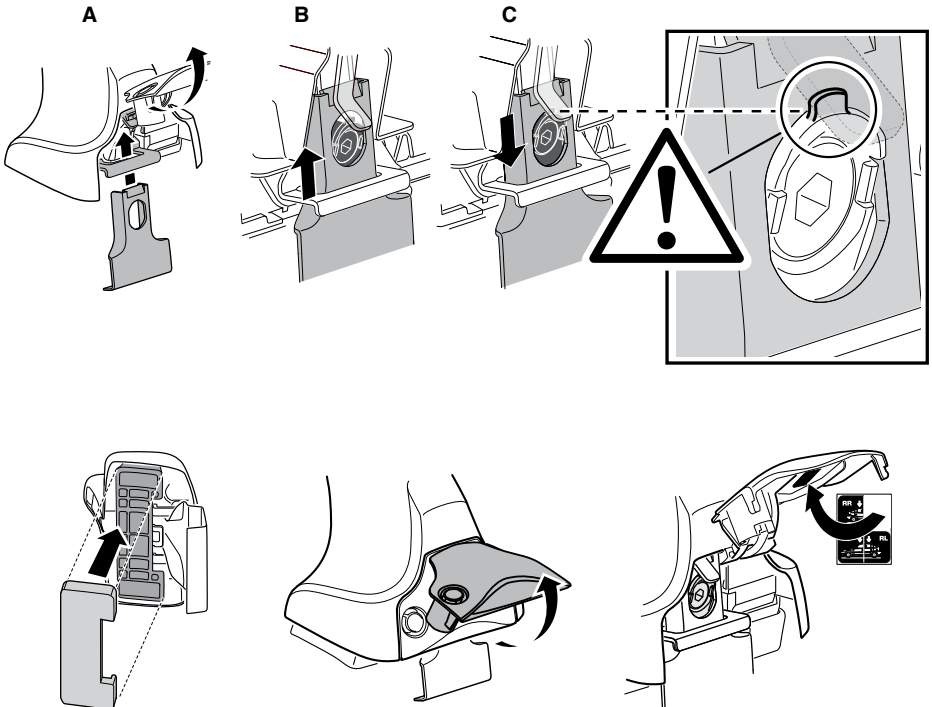
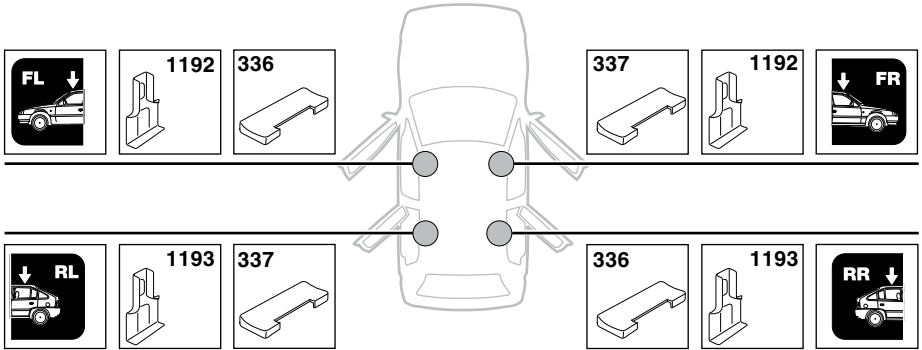
	<b>Y inch</b>	<b>Y mm</b>
<b>HYUNDAI Azera, 4-dr Sedan, 11-</b>	<b>41"</b>	<b>1041 mm</b>
<b>HYUNDAI Grandeur, 4-dr Sedan, 11-</b>	<b>41"</b>	<b>1041 mm</b>

**4**

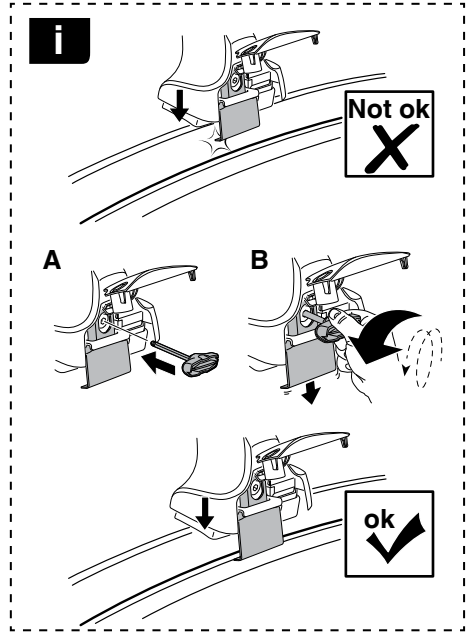


# 5

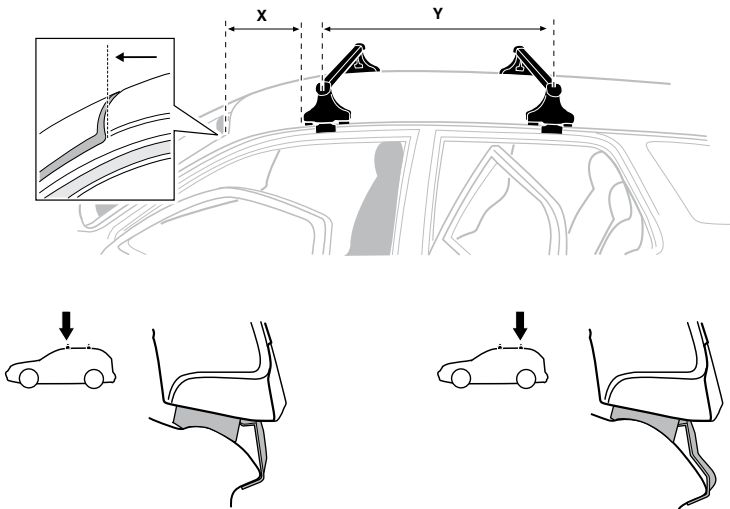
HYUNDAI Azera, 4-dr Sedan, 11-  
HYUNDAI Grandeur, 4-dr Sedan, 11-



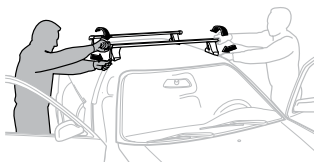
6



	X mm	Y mm	X inch	Y inch
HYUNDAI Azera, 4-dr Sedan, 11-	280 mm	700 mm	11"	27 1/2"
HYUNDAI Grandeur, 4-dr Sedan, 11-	280 mm	700 mm	11"	27 1/2"



7



GB/US Tighten alternately  
 D Die Schrauben abwechselnd anziehen  
 F Serrer alternativement chaque côté  
 NL Afwisselend aan de linker- en de rechterkant aandraaien  
 I Alternare il serraggio delle viti  
 E Apertar alternativamente  
 PT Aperte alternadamente  
 S Dra åt växelvis  
 FIN Kierrä vuorotellen  
 EST Pinguldage vaheldumisi  
 LAT Pieļieciet pamišus  
 LIT Užsukinėkite pakaitomis  
 PL Śruby dokręcaj naprzemiennie  
 RU Затягивайте попеременно

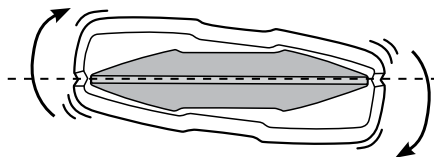
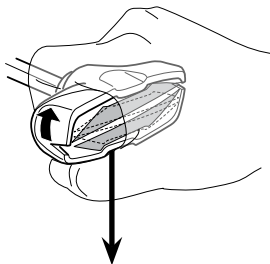
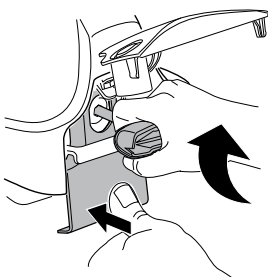
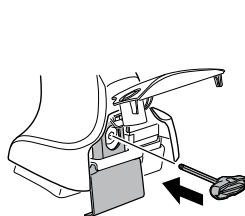
CZ Pokręťta bagażnika dokręcaj naprzemiennie.  
 SK Dofahajte striedavo  
 SLO Privijajte izmenično.  
 HR Naizmjerno zategnite  
 HU Egymástól függetlenül szorítandó  
 GR Σφιγίγες εναλλάξ  
 TR Dönüşümlü sıkın

中文 交替拧紧

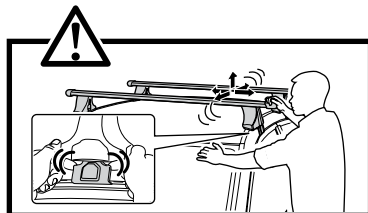
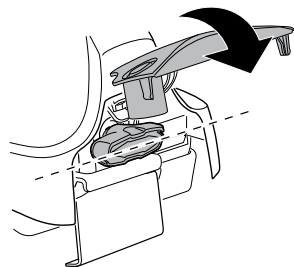
한국어 번갈아 가며 조이십시오.

日本語 交互に締め付けてください。

ไทย ชันในแบบสลับ



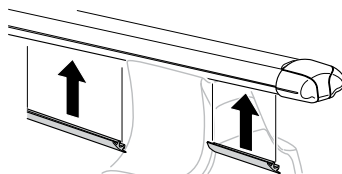
≈ 3 Nm

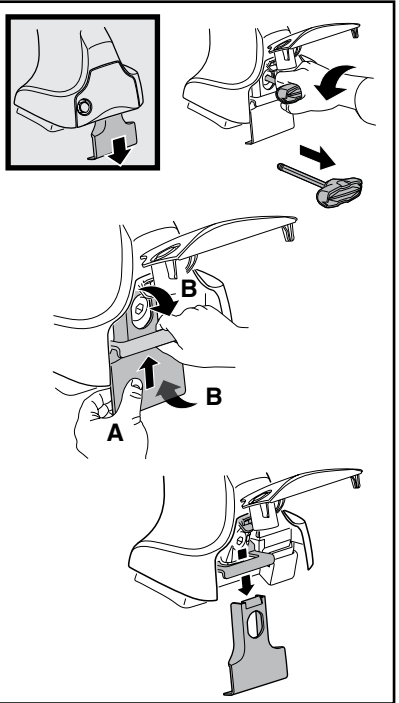
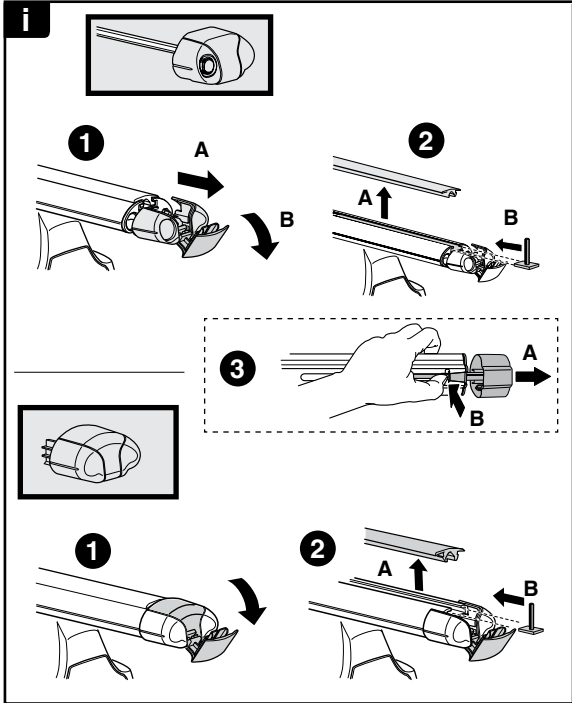


8

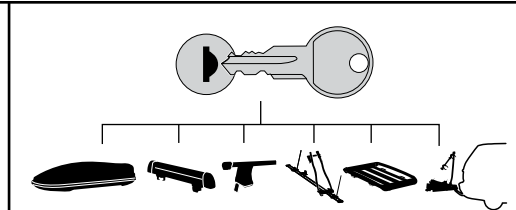


x1  
17 mm





**THULE**  
SWEDEN  
**ONE  
KEY  
SYSTEM**



		(x4)
		(x6)
		(x8)
NA		(x10)
EUR		(x12)
ASIA		

