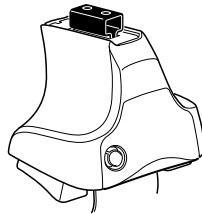
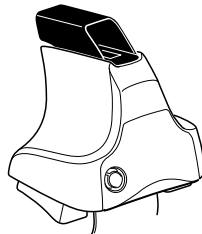
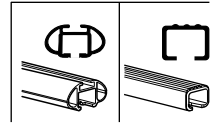


# Kit 1626

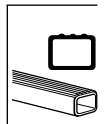
CITROËN C4, 5-dr Hatchback, 10-



**754** Rapid System  
**480R** Rapid Traverse (North America)



**480** Traverse (North America)



xx kg  
xx lbs

7 kg  
15,4 lbs

Max.  
75 kg  
Max.  
165 lbs

80 km/h  
50 Mph

130 km/h  
80 Mph

40 km/h  
25 Mph

km/h  
Mph

THULE

Kit XXXX

instructions

THULE

x1

x4

754 Rapid System

x4

480R Rapid Traverse (North America)

x4

x4

754 Rapid System

480R Rapid Traverse (North America)

x1

x4

x4

x4

480 Traverse (North America)

x2

x2

23 mm

x2

x4

x4

x1

17 mm

x2

23 mm

x2

x2

x2

(North America)

x2

x2

x2

1150

x2

1151

x2

x1

313

x1

314

x1

333

x1

334

x1

x1

RR  
FR  
FL  
RL

1



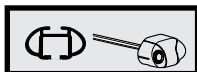
2



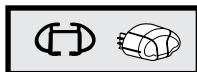
754 Rapid System  
480R Rapid Traverse  
(North America)



x4



x4



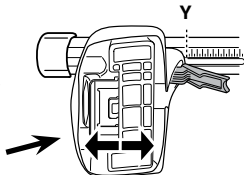
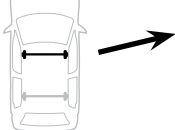
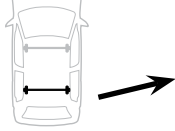
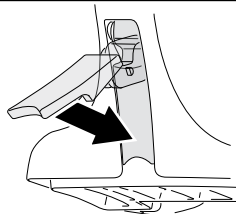
x4

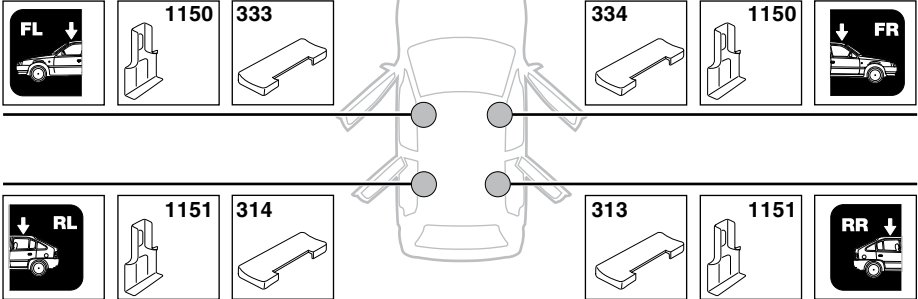


480 Traverse  
(North America)

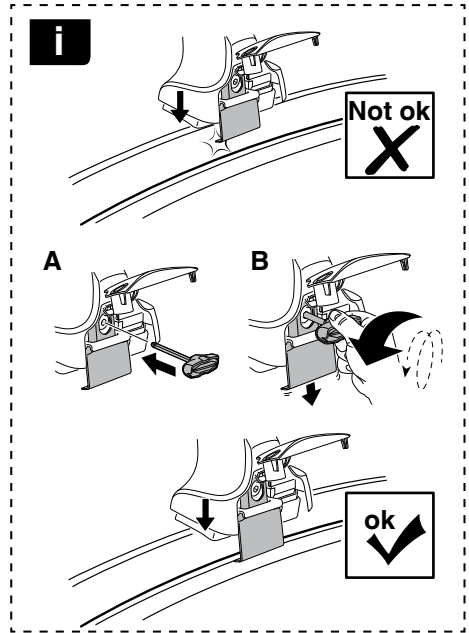
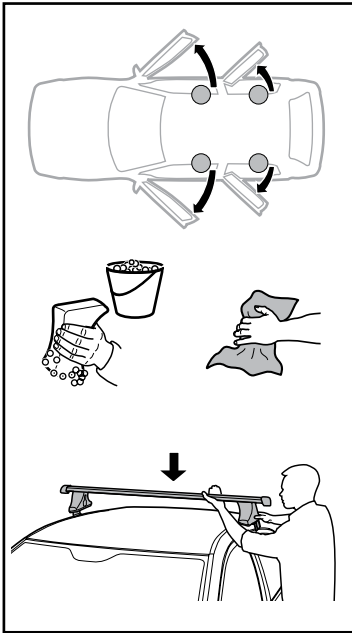


x4

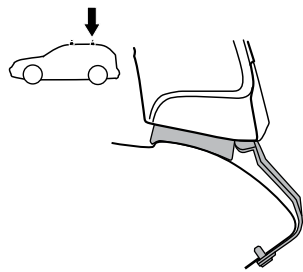
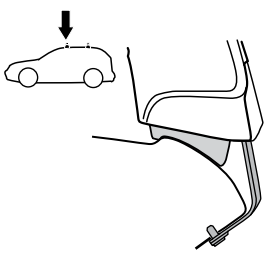
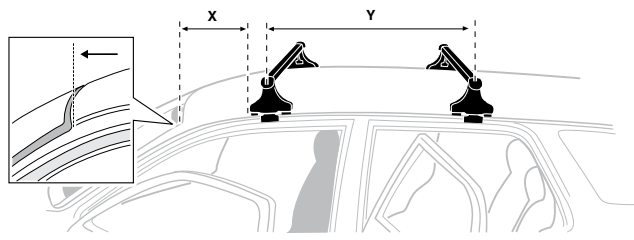
**3****754** Rapid System**X****CITROËN C4, 5-dr Hatchback, 10-****X****38****Y****CITROËN C4, 5-dr Hatchback, 10-****Y****32,5****3****480R** Rapid Traverse**480** Traverse**(North America)****CITROËN C4, 5-dr Hatchback, 10-****X inch****X mm****40 5/8"****1031 mm****CITROËN C4, 5-dr Hatchback, 10-****Y inch****Y mm****38 3/8"****976 mm****4**

**5****CITROËN C4, 5-dr Hatchback, 10-**

6



	X mm	Y mm	X inch	Y inch
CITROËN C4, 5-dr Hatchback, 10-	210 mm	725 mm	8 1/4"	28 1/2"



7



GB/US Tighten alternately  
 D Die Schrauben abwechselnd anziehen  
 F Serrer alternativement chaque côté  
 NL Afwisselend aan de linker- en de rechterkant aandraaien  
 I Alternare il serraggio delle viti  
 E Apretar alternativamente  
 PT Aperte alternadamente  
 S Dra åt växelvis  
 FIN Kierrä vuorotellen  
 EST Pinguldage vaheldumisi  
 LAT Pieļieciet pamišus  
 LIT Užsukinėkite pakaitomis  
 PL Śruby dokręcaj naprzemiennie  
 RU Затягивайте попеременно

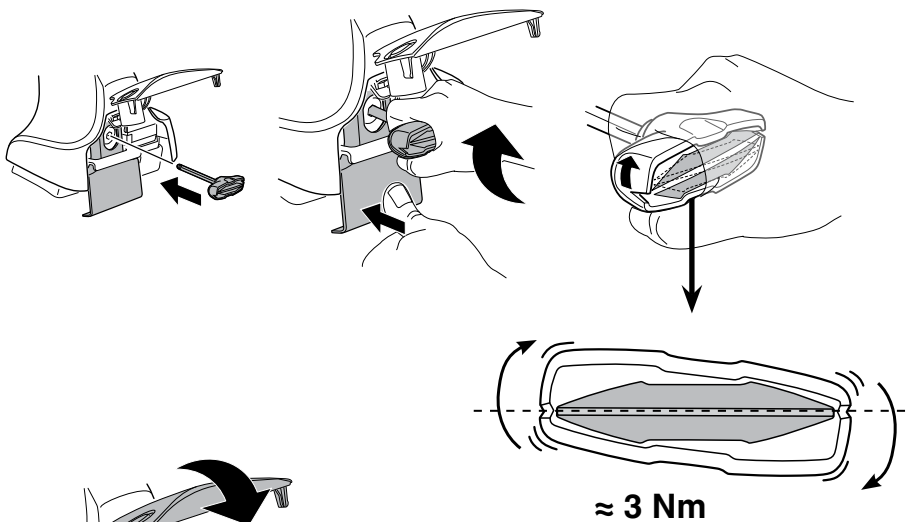
CZ Pokręťta bagażnika dokręcaj dokręcaj naprzemiennie.  
 SK Dofahajte striedavo  
 SLO Privijajte izmenično.  
 HR Naizmjerno zategnite  
 HU Egymástól függetlenül szorítandó  
 GR Σφιγίγες εναλλάξ  
 TR Dönüşümlü sıkın

中文 交替拧紧

한국어 번갈아 가며 조이십시오.

日本語 交互に締め付けてください。

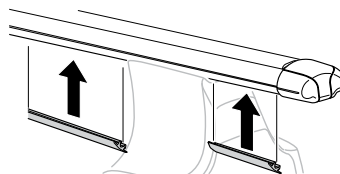
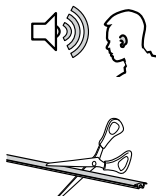
ไทย ชันในแบบสลับ

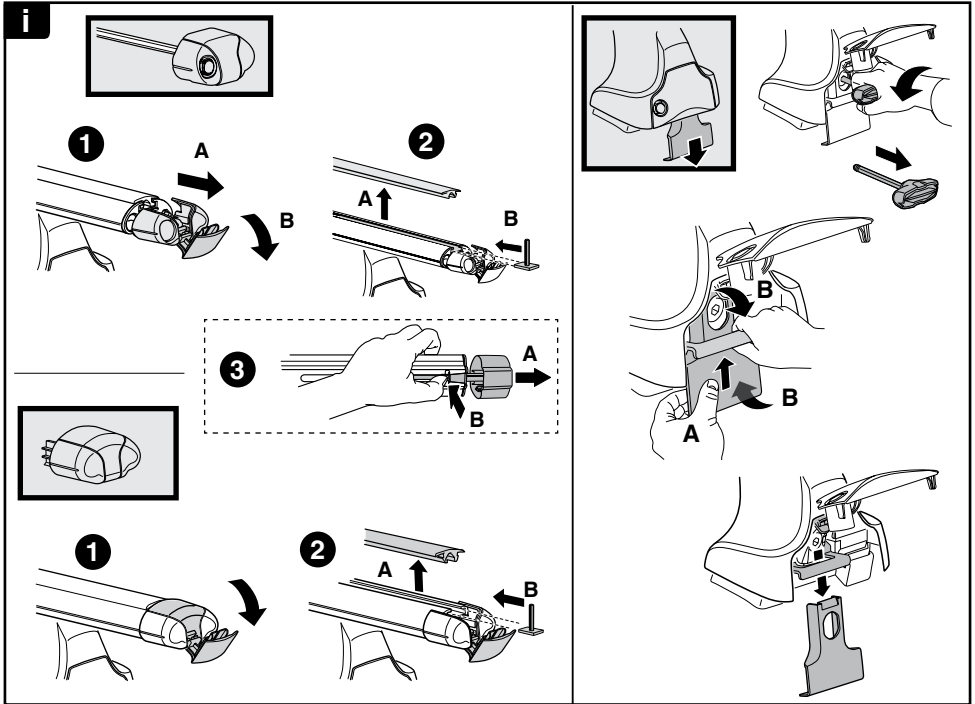


8

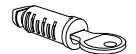
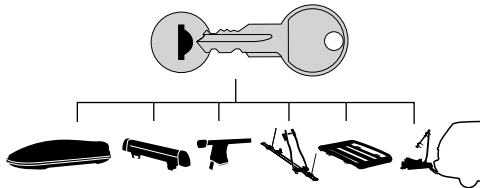


x1  
17 mm





**THULE**  
SWEDEN  
**ONE  
KEY  
SYSTEM**



**544** (x4)

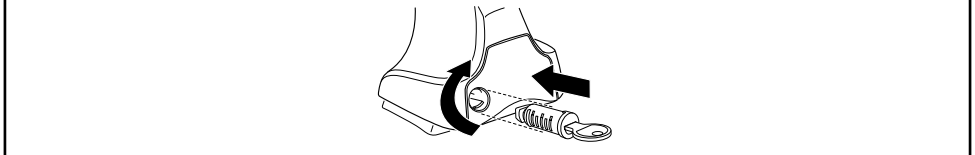
**596** (x6)

**588** (x8)

NA **510** (x10)

EUR **452** (x12)

ASIA



WW ▶ Thule Sweden AB, Box 69, 330 33 Hillerstorp, SWEDEN  
NA ▶ Thule Inc., 42 Silvermine Road, Seymour, Connecticut 06483, USA

info@thule.com  
customer.service@thule.com

www.thule.com

503-1626-02