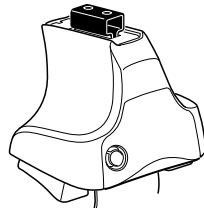
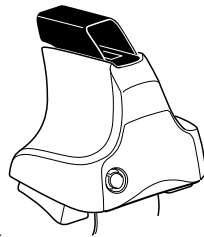
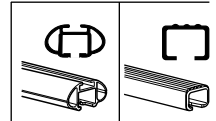


Kit 1485

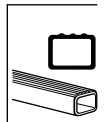
MITSUBISHI Delica, 5-dr MPV, 07-



480R Rapid Traverse
754 Rapid System



480 Traverse



xx kg
 xx lbs

7 kg
 15,4 lbs

Max. 50 kg
Max. 110 lbs

80 km/h
 50 Mph

130 km/h
 80 Mph

40 km/h
 25 Mph

km/h
Mph

THULE

Kit XXXX

Instructions

x1

480R Rapid Traverse

x4

754 Rapid System

x4

x1

480 Traverse

x4

x2

x2

23 mm

x1

17 mm

x2

23 mm

x2

x2

x2

x4

x4

x2

x2

x2

x2

x4

x4

1118 x4

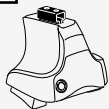
347 x2

346 x2

x1

Kit

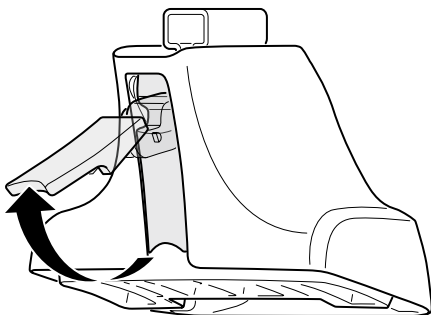
1



480R Rapid Traverse
754 Rapid System



480 Traverse



2

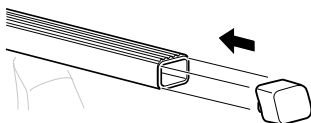
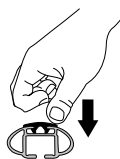
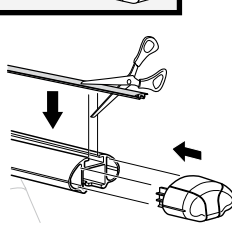
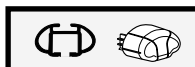
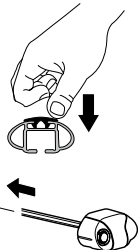
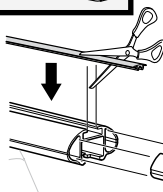
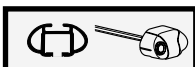
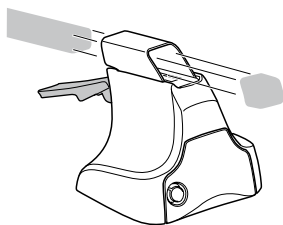
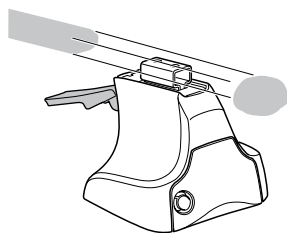


480R Rapid Traverse
754 Rapid System

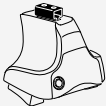


480 Traverse

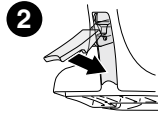
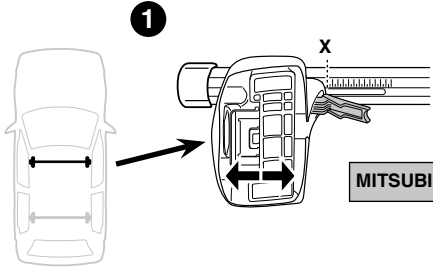
+



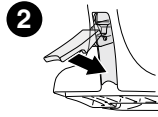
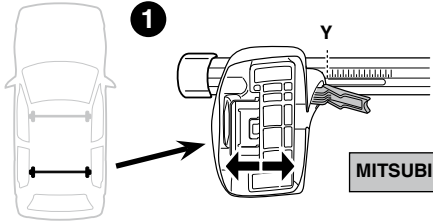
3



754 Rapid System



MITSUBISHI Delica, 5-dr MPV, 07-	X
	55



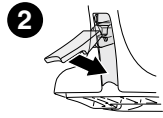
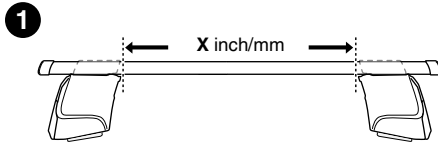
MITSUBISHI Delica, 5-dr MPV, 07-	Y
	53,5



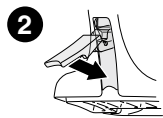
480R Rapid Traverse



480 Traverse

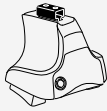


MITSUBISHI Delica, 5-dr MPV, 07-	X inch	X mm
	47 1/4"	1200 mm



MITSUBISHI Delica, 5-dr MPV, 07-	Y inch	Y mm
	46 3/4"	1185 mm

4



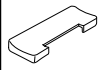
480R Rapid Traverse
754 Rapid System



480 Traverse

MITSUBISHI Delica, 5-dr MPV, 07-

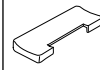
346



1118



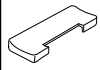
346



1118



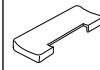
347



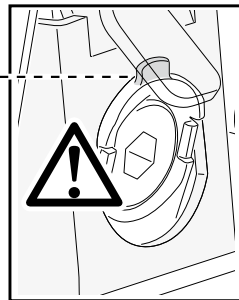
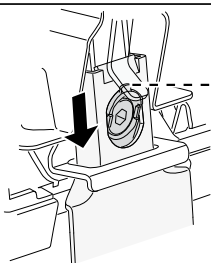
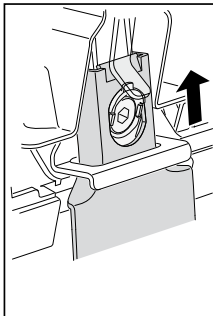
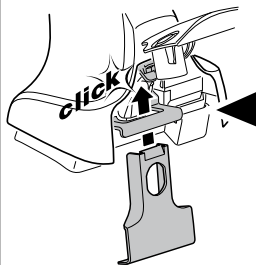
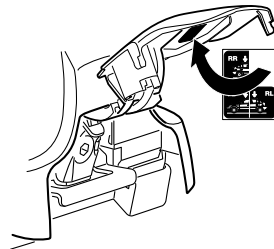
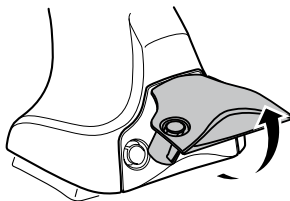
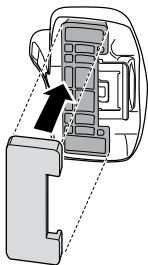
1118



347



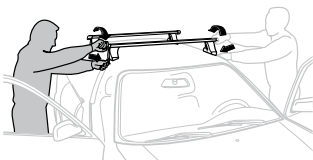
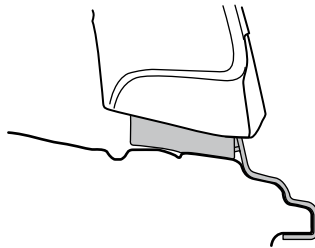
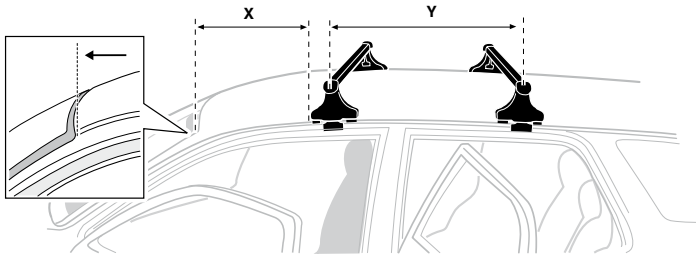
1118



5

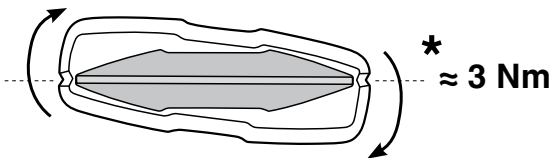
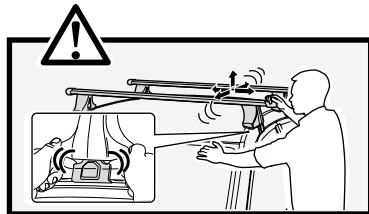
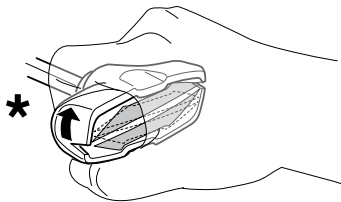
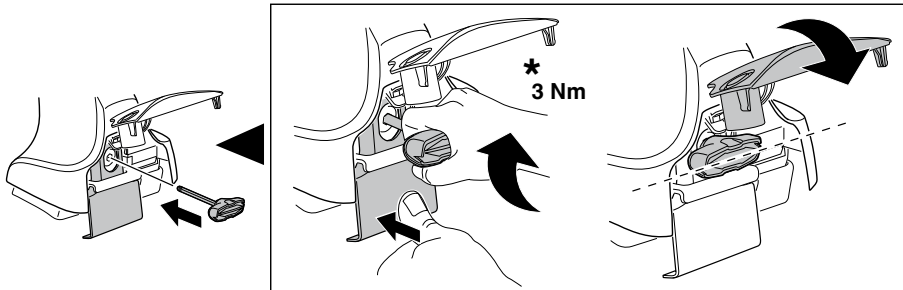
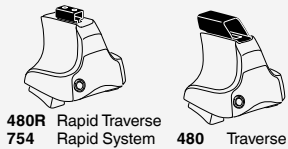


	X mm	Y mm	X inch	Y inch
MITSUBISHI Delica, 5-dr MPV, 07-	860 mm	700 mm	33 ⁷ / ₈ "	27 ¹ / ₂ "

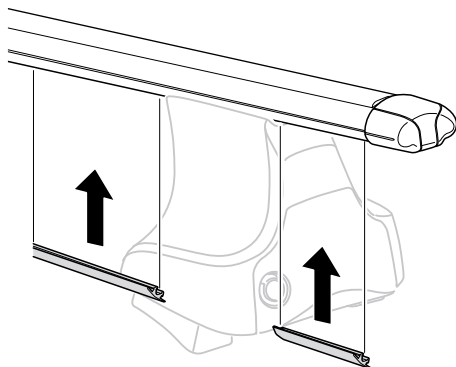
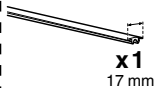


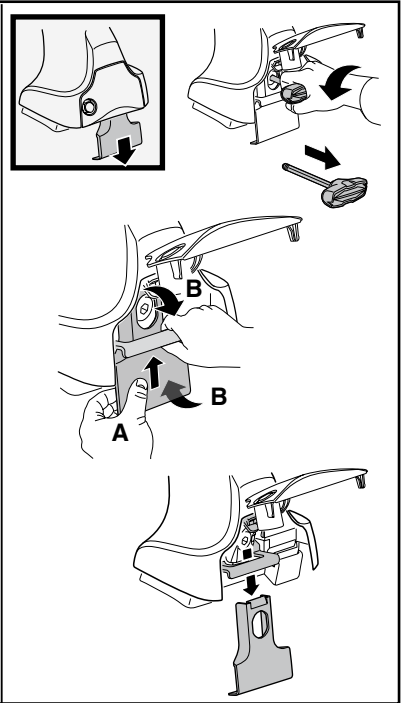
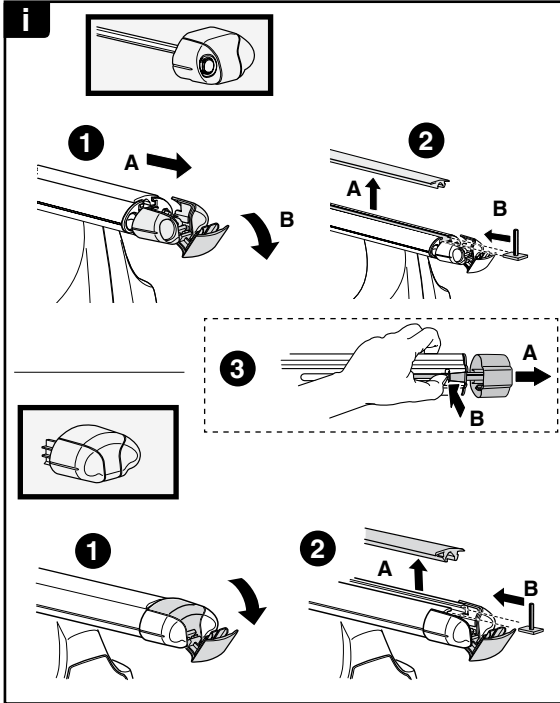
- | | | | |
|--------------|---|------------|---|
| GB/US | Tighten alternately | CZ | Pokreťta bagazníka dokrečaj dokrečaj naprzemiennie. |
| D | Die Schrauben abwechselnd anziehen | SK | Dofahujte striedavo |
| F | Serrer alternativement chaque côté | SLO | Privijajte izmenično. |
| NL | Afwisselend aan de linker- en de rechterkant aandraaien | HR | Naizmjenično zategniti |
| I | Alternare il serraggio delle viti | HU | Egymástól függetlenül szorítandó |
| E | Apretar alternativamente | GR | Σφιγγεται εναλλάξ |
| PT | Aperte alternadamente | TR | Dönüşümlü sıkın |
| S | Dra åt växelvis | 中文 | 交替拧紧 |
| FIN | Kierrä vuorotellen | 한국어 | 번갈아 가며 조이십시오. |
| EST | Pinguldage vaheldumisi | 日本語 | 交互に締め付けてください。 |
| LAT | Pievēlciet pamāšus | ไทย | ขันในแบบสลับ |
| LIT | Užsukinėkite pakaitomis | | |
| PL | Śruby dokrećaj naprzemiennie | | |
| RU | Затягивайте попеременно | | |

6

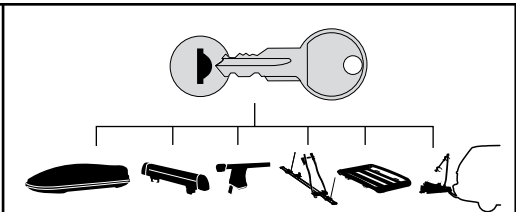







7





THULE
SWEDEN
**ONE
KEY
SYSTEM**



-  **544** (x4)
 -  **596** (x6)
 -  **588** (x8)
 -  **510** (x10)
 -  **452** (x12)
- NA
EUR
ASIA



WW ▶ Thule Sweden AB, Box 69, 330 33 Hillerstorp, SWEDEN
NA ▶ Thule Inc., 42 Silvermine Road, Seymour, Connecticut 06483, USA

info@thule.com
customer.service@thule.com

 www.thule.com